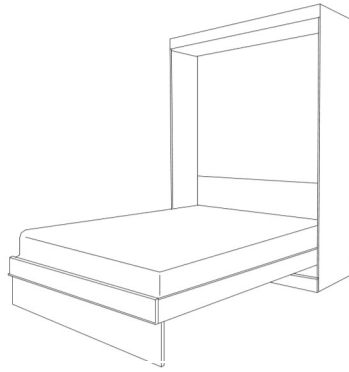
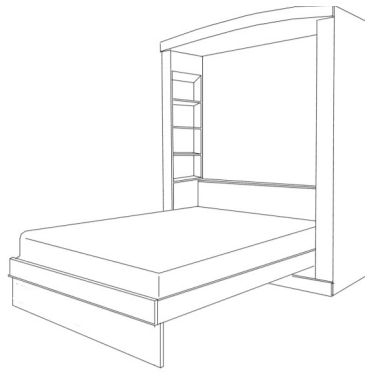


EURO TABLE

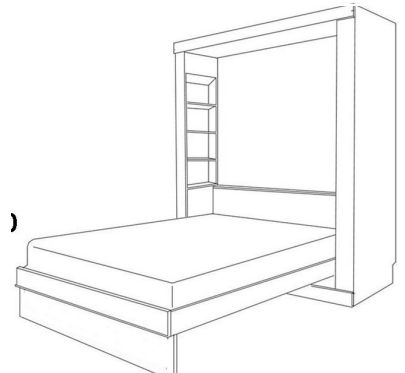
STANDARD



DELUXE



PREMIUM



Straight top-flat headboard ♦ Curved Top- Shelf Hdbd-Bookcases ♦ Straight Top-Shelf Hdbd-Bookcases

STAIN FINISHES:

NATURAL HONEY MAPLE
SUNSET COGNAC
BARK GRAY GRAY
CINNAMON CARAMEL
ESPRESSO

PAINT FINISHES: WHITE

ALABASTER
COBALT

	SKU	DIMENSION CLOSED	DIMENSION OPEN
QUEEN STANDARD TABLE	EVT50	65w x 17d x 90h	65w x 86d x 90h
QUEEN DELUXE TABLE	EVXT50	75w x 25d x 90h	75w x 92d x 90h
QUEEN PREMIUM TABLE	EVZT50	75w x 20d x 90h	75w x 92d x 90h

HARDWARE

#3 NICKEL BAR

#13 BRONZE BAR



EURO PIER CABINETS standard, Deluxe, Premium

3 DRAWER

ATFS	16 X 85
ATQS	16 X 90
APTF	24 X 85
APTQ	24 X 90
APGF	32 X 85
APGQ	32 X 90

2 DRAWER NIGHTSTAND

2 Drawers -pull out tray with 3 open adjustable shelves.

ANFS	16 X 85
ANQS	16 X 90
APNF	24 X 85
APNQ	24 X 90

2 LATERAL FILES-PENCIL

2 Lateral File Drawers , pencil drawer with 3 adj. shelves

ALFS	16 X 85
ALQS	16 X 90
APLF	24 X 85
APLQ	24 X 90

2 DRAWER NIGHTSTAND-DOOR

2 Drawers -pull out tray with 1 open shelf and Door..

AUFS	16 X 85
AUQS	16 X 90
APUF	24 X 85
APUQ	24 X 90

3 DRAWER-DOOR

AWFS	16 X 85
AWQS	16 X 90
APWF	24 X 85
APWQ	24 X 90

2 LATERAL FILES-PENCIL-DOOR

2 lateral file drawers pencil with Door. inside has clothes hangar bar.

AXFS	16 X 85
AXQS	16 X 90
APXF	24 X 85
APXQ	24 X 90

3 DRAWER-2 DOOR

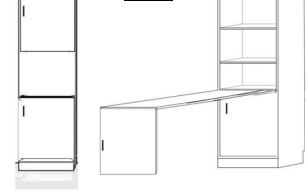
3 drawers -with 2 Doors. Inside has clothes hangar bar.

APWU	32 x 85
------	---------

BOOKCASE

ABFS	16 X 85
ABQS	16 X 90
APBF	24 X 85
APBQ	24 X 90
ABFL	32 X 85
ABQL	32 X 90

FOLD DOWN DESK

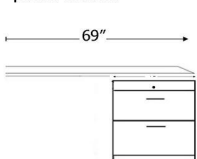


DESK-DC 63w X 31 1/2h x 22d
FILE CART AFC 16 5/8x 28 1/2 x 22

APAF 24 x 85

2 DOOR

DESK BASE-1 lateral file drawer, medium drawer & pencil drawer



ADFL 32 X 85

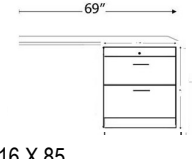
AQFL 32 X 90

BSDL Shaped Desktop

ALD 24 X 90

1 DOOR

DESK BASE-1 lateral file drawer, medium drawer & pencil drawer



ADFS 16 X 85

ADQS 16 X 90

APCF 24 X 85

APCQ 24 X 90

BSD Straight desktop

AFD DESK BASE



NIGHTSTAND-3 DRAWER 24w x 17d x 28h

NIGHTSTAND-TRAY 24w x 17d x 28h

PRODUCT OPTIONS ARE SUBJECT TO CHANGE WITHOUT NOTICE