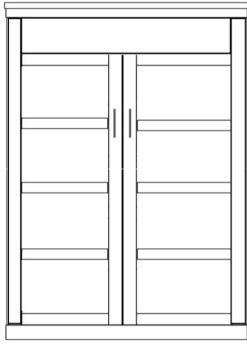


# NANTUCKET

STANDARD

DELUXE

PREMIUM



Straight top-flat headboard • Curved Top- Shelf Hdbd-Bookcases • Straight Top-Shelf Hdbd-Bookcases

STAIN FINISHES:

NATURAL HONEY MAPLE  
SUNSET COGNAC  
BARK GRAY GRAY  
CINNAMON CARAMEL  
ESPRESSO

PAINT FINISHES: WHITE

ALABASTER  
COBALT

	SKU	DIMENSION CLOSED	DIMENSION OPEN
QUEEN STANDARD	<b>NV50</b>	65w x 17d x 90h	65w x 86d x 90h
FULL STANDARD	<b>NV46</b>	59w x 17d x 85h	59w x 81d x 85h
QUEEN DELUXE	<b>NVX50</b>	75w x 25d x 90h	75w x 92d x 90h
QUEEN PREMIUM	<b>NVZ50</b>	75w x 20d x 90h	75w x 92d x 90h



## NANTUCKET standard, deluxe, premium side storage cabinets

**3 DRAWER**

NTFS	16 X 85
NTQS	16 X 90
NPTF	24 X 85
NPTQ	24 X 90
NPGF	32 X 85
NPGQ	32 X 90

**2 DRAWER NIGHTSTAND**

2 Drawers -pull out tray with 3 open adjustable shelves.

NNFS	16 X 85
NNQS	16 X 90
NPNF	24 X 85
NPNQ	24 X 90

**2 LATERAL FILES-PENCIL**

2 Lateral File Drawers , pencil drawer with 3 adj. shelves

NLFS	16 X 85
NLQS	16 X 90
NPLF	24 X 85
NPLQ	24 X 90

**2 DRAWER NIGHTSTAND-DOOR**

2 Drawers -pull out tray with 1 open shelf and Door..

NUFS	16 X 85
NUQS	16 X 90
NPUF	24 X 85
NPUQ	24 X 90

**3 DRAWER-DOOR**

NWFS	16 X 85
NWQS	16 X 90
NPWF	24 X 85
NPWQ	24 X 90

**2 LATERAL FILES-PENCIL-DOOR**

NXFS	16 X 85
NXQS	16 X 90
NPXF	24 X 85
NPXQ	24 X 90

**3 DRAWER-2 DOOR**

3 drawers -with 2 Doors. Inside has clothes hangar bar.

NPWU	32 x 85
------	---------

**BOOKCASE**

NBFS	16 X 85
NBQS	16 X 90
NPBF	24 X 85
NPBQ	24 X 90
NBFL	32 X 85
NBQL	32 X 90

**FOLD DOWN DESK**

NPAF	24 x 85
------	---------



**DESK-DC**

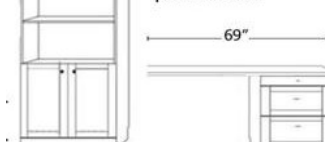
FILE CART NFC	16 5/8x 28 1/2 x 22
---------------	---------------------



63w X 31 1/2h x 22d

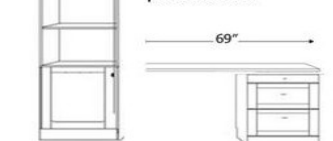
**2 DOOR**

DESK BASE-1 lateral file drawer, medium drawer & pencil drawer



NDFL	32 X 85
NDQL	32 X 90
BSDL	Shaped Desktop
NLD	24 X 90

DESK BASE-1 lateral file drawer, medium drawer & pencil drawer



NDFS	16 X 85
NDQS	16 X 90
NPCF	24 X 85
NPCQ	24 X 90
BSD	Straight desktop
NFD	DESK BASE

NIGHTSTAND-3 DRAWER-NNS	24w x 17d x 28h
NIGHTSTAND-TRAY-NNST	24w x 17d x 28h

PRODUCT OPTIONS AND PRICING ARE SUBJECT TO CHANGE WITHOUT NOTICE